

# Active Directory Reader

## Table of Contents

Active Directory Reader .....	1
Active Directory Reader .....	1
Step 1: App Info .....	2
Step 2: AD Info.....	3
Domains .....	3
OUs (Organizational Units) .....	3
Groups.....	4
Step 3: Get Users.....	5
Step 4: Save Users .....	6
Messages / Log.....	7
Chapter Index.....	8

## Active Directory Reader

This document will describe how to use PDSA .NET Productivity Framework Active Directory Reader utility. This utility is used to read your users contained in your Active Directory and save them into the pdsaUser table in your PDSA Framework database.

Go to the \PDSAFramework-500\Utility folder and click on the PDSAFrameworkUtilities.exe. This will bring up the PDSA Framework Utilities. Click on the Application Maintenance tab, then click on the “AD Reader” button (Figure 1).



Figure 1: AD Reader Button

## Step 1: App Info

On the first tab (Figure 2) you will select the type of application that you will be building and the language you wish to use. Based on the type of application a specific project template will be selected.

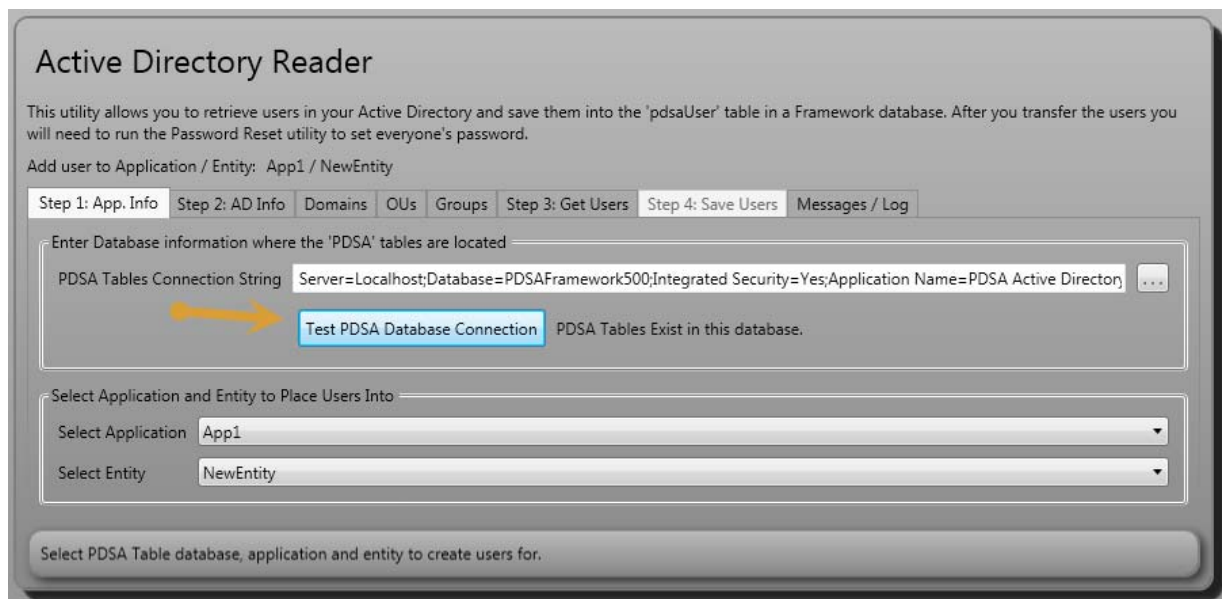


Figure 2: Select a Framework Database

## Step 2: AD Info

In Step 2 (Figure 3) you will connect to your domain using a valid domain controller name, a user name and password that has permissions to read Domains, Groups, Organizational Units (OUs), and Users from the Active Directory.

The screenshot shows the 'Active Directory Reader' application window. At the top, it says 'Active Directory Reader' and provides a brief description: 'This utility allows you to retrieve users in your Active Directory and save them into the 'pdsaUser' table in a Framework database. After you transfer the users you will need to run the Password Reset utility to set everyone's password.' Below this, it says 'Add user to Application / Entity: App1 / NewEntity'. There are several tabs: 'Step 1: App. Info', 'Step 2: AD Info' (which is selected), 'Domains', 'OUs', 'Groups', 'Step 3: Get Users', 'Step 4: Save Users', and 'Messages / Log'. The 'Step 2: AD Info' tab contains the following fields: 'AD/LDAP Path' with the value 'LDAP://DC=TestDomain,DC=net' and a 'Get Default LDAP Path' button; 'Domain Controller Name' with the value 'TestDomain'; 'User Name' with the value 'Test'; and 'Password' with a masked field of seven dots. Below these fields is a 'Test AD/LDAP Connection' button. At the bottom of the window, there is a message: 'Enter a valid AD/LDAP Path and click 'Test Connection'.'

Figure 3: Connect to your Active Directory

## Domains

On this screen (Figure 4) you can retrieve the complete list of domains on your network. By default it will be filled in with all of your domains.

The screenshot shows the 'Active Directory Reader' application window with the 'Domains' tab selected. It has the same header and description as Figure 3. The 'Add user to Application / Entity' field is 'App1 / NewEntity'. The tabs are 'Step 1: App. Info', 'Step 2: AD Info', 'Domains' (selected), 'OUs', 'Groups', 'Step 3: Get Users', 'Step 4: Save Users', and 'Messages / Log'. A 'Get Domains' button is visible. Below it is a table with two columns: 'Domain Name' and 'Domain Distinguished Name'. The first row contains the values 'pdsainc.net' and 'LDAP://pdsainc.net/DC=pdsainc,DC=net'. At the bottom of the window, there is a message: 'Select one or more domains from which to retrieve users.'

Figure 4: This screen shows you networks' list of domains

## OUs (Organizational Units)

On this screen (Figure 5) you can retrieve the complete list of OUs in your domain. You can type in a partial OU name to filter the list.

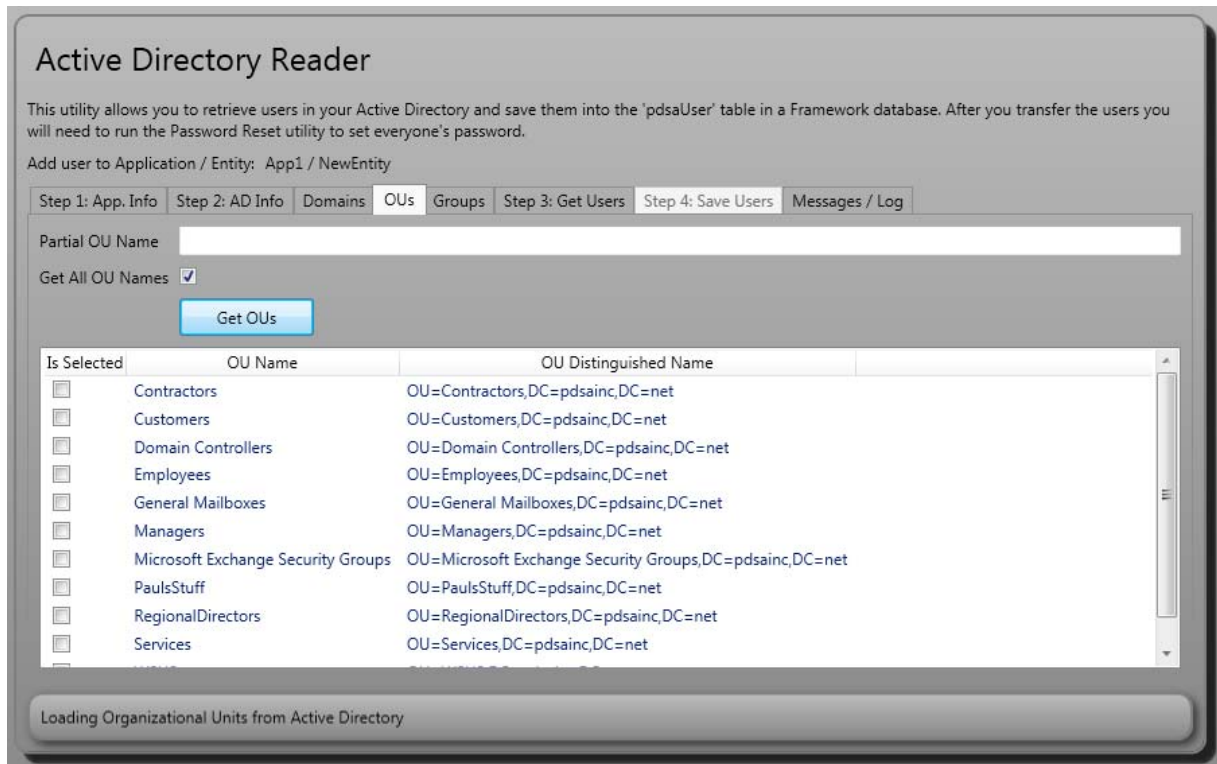


Figure 5: This screen allows you to display all OUs or filter on a partial name

## Groups

On this screen (Figure 6) you can view all groups in your domain. You can filter on a partial group name as well.

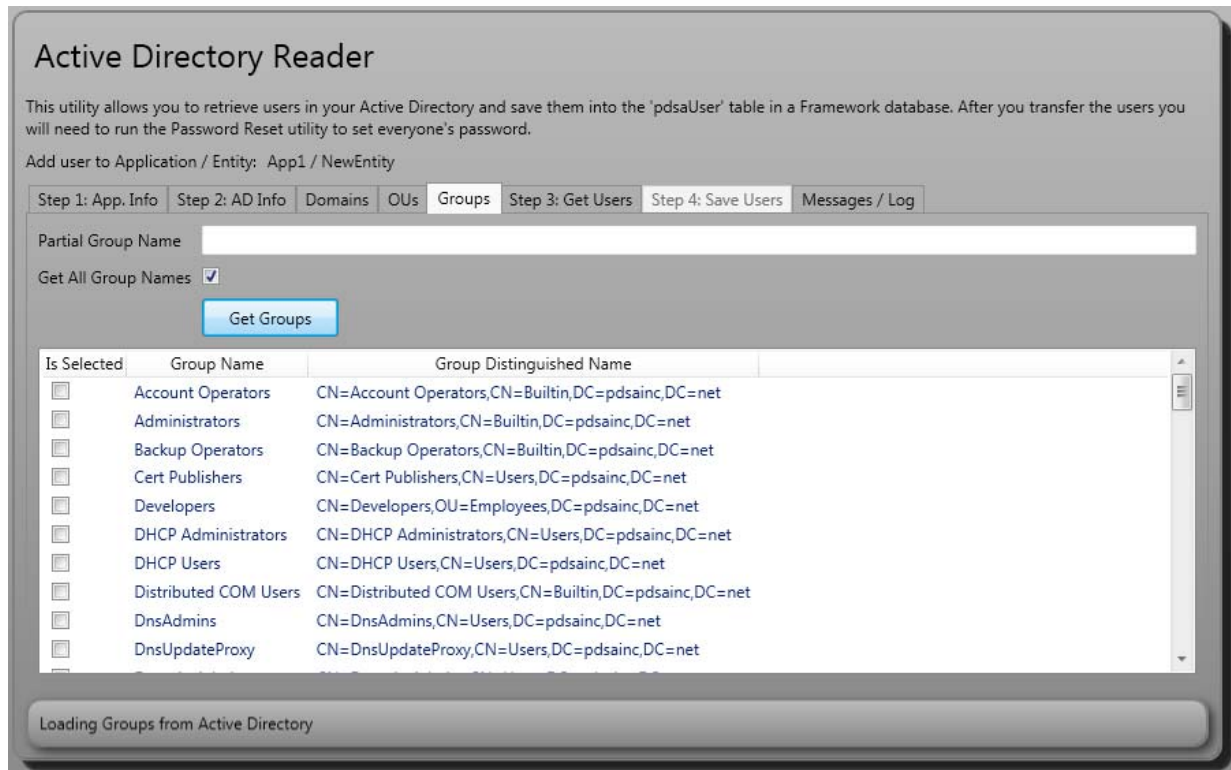


Figure 6: This screen will show you all groups or allow you to filter on a partial name

## Step 3: Get Users

In Step 3 (Figure 7) is where you will get the list of users in your domain and select which ones you want to add to the pdsaUser table and associate with the application and entity you selected in Step 1. This list will show you whether or not the user is already in the user table and whether or not it has already been associated with the current application and entity.

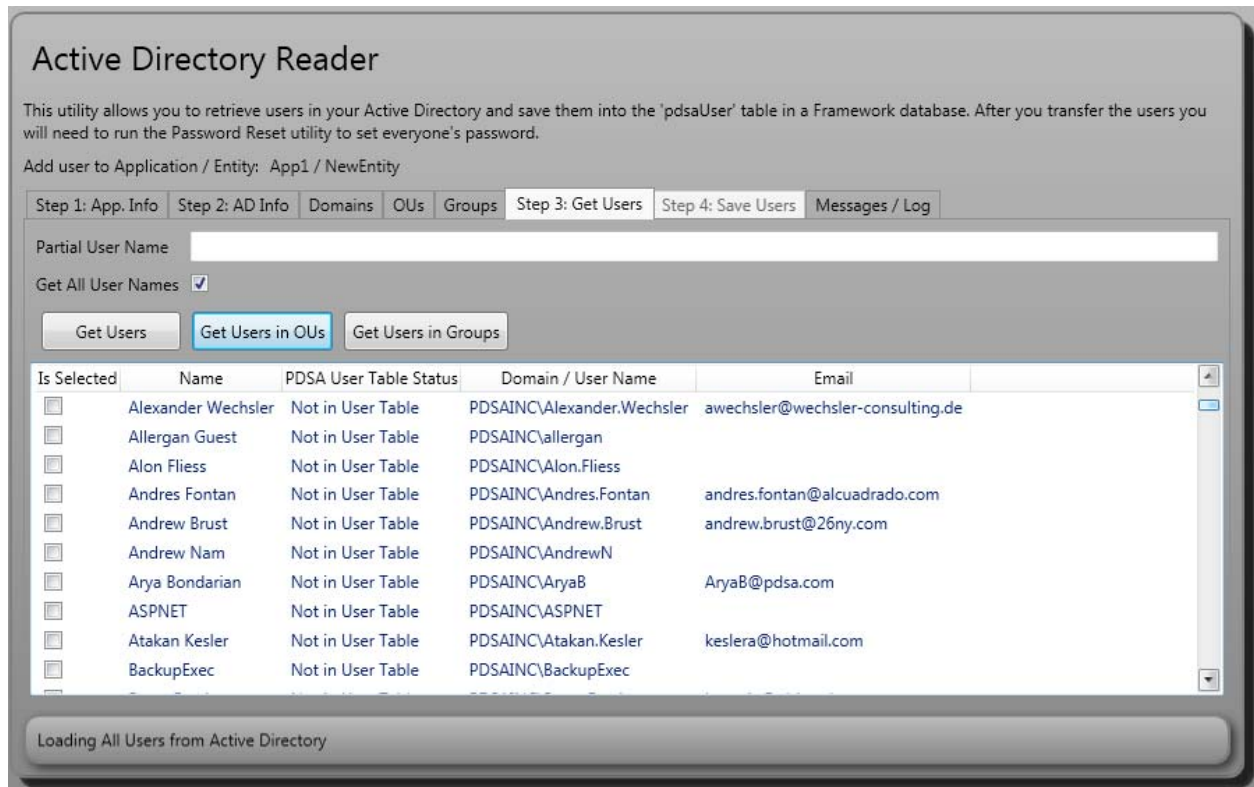


Figure 7: You can retrieve users by filtering on a partial name or by OU or group.

## Step 4: Save Users

In Step 4 (Figure 8) is where you will save any selected users into the pdsaUser table. NOTE: This tab will not be highlighted until you select one or more users in Step 3.

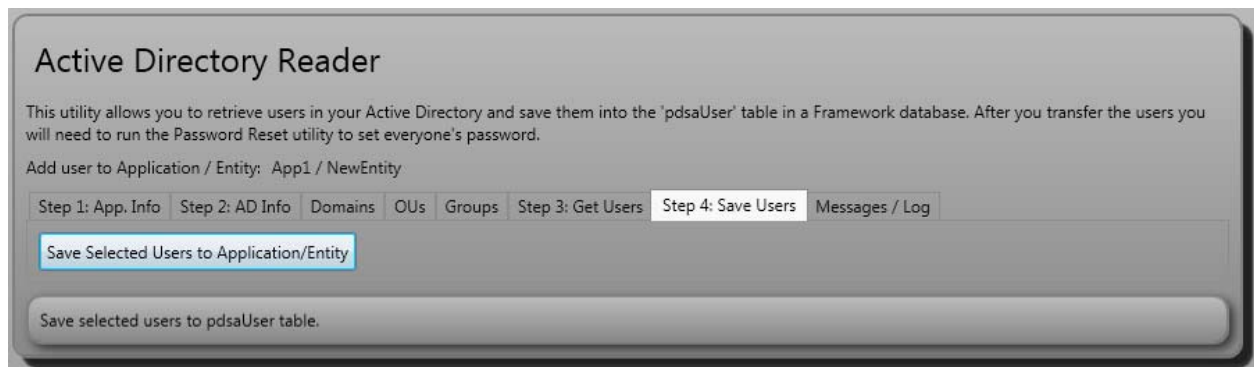


Figure 8: Save Users to the pdsaUser table

# Messages / Log

All messages from this current session of the AD Reader will be displayed on this screen. In addition you may read the log from all sessions on this screen. Click the Reset Log File button to delete the existing log.

**Active Directory Reader**

This utility allows you to retrieve users in your Active Directory and save them into the 'pdsaUser' table in a Framework database. After you transfer the users you will need to run the Password Reset utility to set everyone's password.

Add user to Application / Entity: App1 / NewEntity

Step 1: App. Info | Step 2: AD Info | Domains | OUs | Groups | Step 3: Get Users | Step 4: Save Users | **Messages / Log**

D:\PDSA-Products\PDSA-Framework\PDSAFramework-500-Source\FrameworkUtilities\PDSAFrameworkUtilities\Log\ActiveDirectoryReaderLog.txt

Read Log File | Reset Log File

```
Framework Connection is valid
Loading All Applications
Testing AD Connection: LDAP://DC=PDSAINC,DC=net
Network Credentials are Valid.
Loading Organizational Units from Active Directory
Loading Groups from Active Directory
Loading All Users from Active Directory
Starting the Save Process...
User PDSAINC\allergan added to pdsaUser table.
User PDSAINC\Alon.Fliess added to pdsaUser table.
User PDSAINC\Andres.Fontan added to pdsaUser table.
User's Saved to PDSA User Table: 3/5/2013 9:52:38 AM
*****
```

View any error/info messages, and view log file.

Figure 9: This screen displays all messages for this session.

# Summary

In this chapter you learned how to use the Active Directory Reader utility to save your AD users into the pdsaUser table.

## Chapter Index

### A

Active Directory Reader, 1  
Active Directory Reader Tutorial, 1

### D

Domains, 3

### G

Groups, 4

### L

Log File, 7

### M

Messages / Log, 7

### O

Organizational Units, 3  
OUs, 3

### S

Step 1  
    App Info, 2  
Step 2  
    AD Info, 3  
Step 3  
    Get Users, 5  
Step 4  
    Save Users, 6